



Design No. V449
BXUV.V449
Fire Resistance Ratings - ANSI/UL 263

[Page Bottom](#)

Design/System/Construction/Assembly Usage Disclaimer

- Authorities Having Jurisdiction should be consulted in all cases as to the particular requirements covering the installation and use of UL Certified products, equipment, system, devices, and materials.
- Authorities Having Jurisdiction should be consulted before construction.
- Fire resistance assemblies and products are developed by the design submitter and have been investigated by UL for compliance with applicable requirements. The published information cannot always address every construction nuance encountered in the field.
- When field issues arise, it is recommended the first contact for assistance be the technical service staff provided by the product manufacturer noted for the design. Users of fire resistance assemblies are advised to consult the general Guide Information for each product category and each group of assemblies. The Guide Information includes specifics concerning alternate materials and alternate methods of construction.
- Only products which bear UL's Mark are considered Certified.

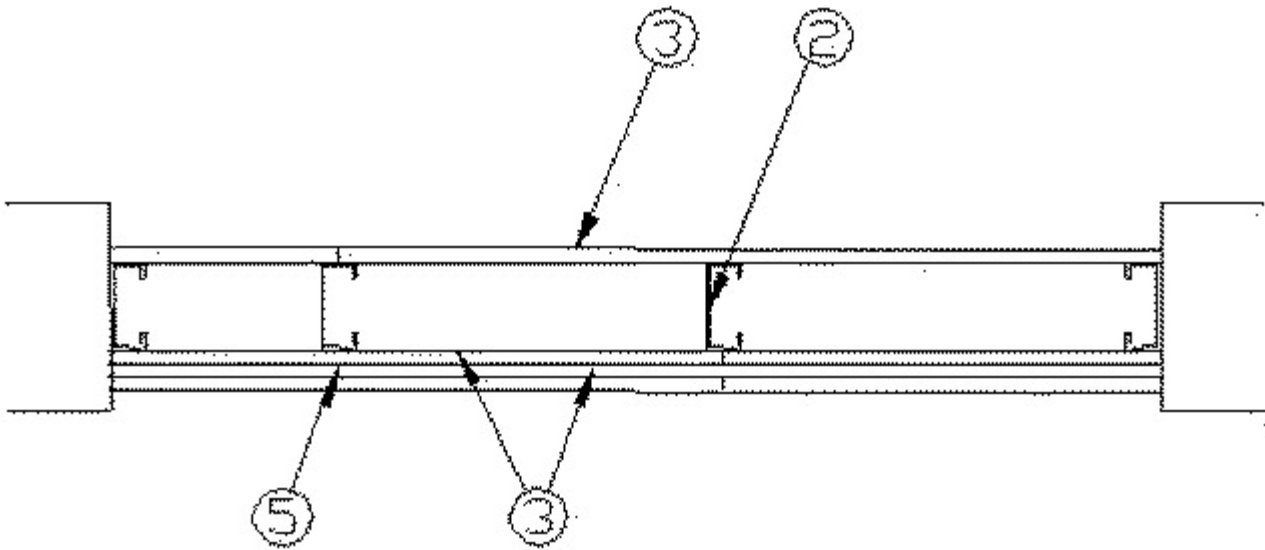
Fire-resistance Ratings - ANSI/UL 263

[See General Information for Fire-resistance Ratings - ANSI/UL 263](#)

Design No. V449

June 06, 2013

Non-Bearing Wall Rating - 2 hr.



1. Floor and Ceiling Runners — (Not Shown) — Channel shaped, fabricated from min 25 MSG corrosion-protected steel, min width to accommodate stud size, with min 1 in. long legs, attached to floor and ceiling with fasteners 24 in. OC max.

1A. Framing Members* - Floor and Ceiling Runner — Not shown - In lieu of Item 1 — For use with Item 2A, proprietary channel shaped runners, min 3-1/2 in. wide with 1-1/4 in. long legs fabricated from min 0.020 in. thick galv steel, attached to floor and ceiling with fasteners spaced 24 in. OC max.

CALIFORNIA EXPANDED METAL PRODUCTS CO — Viper20™ Track

MARINO/WARE, DIV OF WARE INDUSTRIES INC — Viper20™ Track

PHILLIPS MFG CO L L C — Viper20™ Track

1B. Framing Members*— Floor and Ceiling Runners — (Not shown) — As an alternate to Item 1 - For use with Item 2B, channel shaped, min 3-1/2 in. wide fabricated from min 0.018 in. thick galv steel, attached to floor and ceiling with fasteners 24 in. OC. max.

CLARKDIETRICH BUILDING SYSTEMS — CD ProTRAK

DMFCWBS L L C — ProTRAK

MBA BUILDING SUPPLIES — ProTRAK

RAM SALES L L C — Ram ProTRAK

SOUTHEASTERN STUD & COMPONENTS INC — ProTRAK

STEEL STRUCTURAL SYSTEMS L L C — Tri-S ProTRAK

1C. Framing Members* - Floor and Ceiling Runner — Not shown - In lieu of Item 1 — For use with Item 2C, proprietary channel shaped runners, min 3-1/2 in. wide with 1-1/4 in. long legs fabricated from min 0.020 in. thick galv steel, attached to floor and ceiling with fasteners spaced 24 in. OC max.

TELLING INDUSTRIES L L C — Viper20™ Track

1D. Framing Members*— Floor and Ceiling Runners — (Not shown) — As an alternate to Item 1 - For use with Item 2D, channel shaped, min 3-1/2 in. wide fabricated from min 0.018 in. thick galv steel, attached to floor and ceiling with fasteners 24 in. OC. max.

TELLING INDUSTRIES L L C — TRUE-TRACK™

2. Steel Studs — Channel shaped, fabricated from min 25 MSG corrosion-protected steel, 3-1/2 in. min width, min 1-1/4 in. flanges and 1/4 in. return, spaced a max of 24 in. OC. Studs to be cut 3/8 to 3/4 in. less than assembly height.

2A. Framing Members* - Steel Studs — Not shown - In lieu of Item 2 — For use with Item 1A, proprietary channel shaped steel studs, 1-1/4 in. deep by min 3-1/2 in. min width fabricated from min 0.020 in. thick galv steel. Studs cut 3/8 to 3/4 in. less in length than assembly height.

CALIFORNIA EXPANDED METAL PRODUCTS CO — Viper20™

MARINO/WARE, DIV OF WARE INDUSTRIES INC — Viper20™

PHILLIPS MFG CO L L C — Viper20™

2B. Framing Members*— Steel Studs — As an alternate to Item 2 - For use with Item 1B, channel shaped studs, min 3-1/2 in. wide fabricated from min 0.018 in. thick galv steel, spaced a max of 24 in. OC. Studs to be cut 3/8 to 3/4 in. less than assembly height.

CLARKDIETRICH BUILDING SYSTEMS — CD ProSTUD

DMFCWBS L L C — ProSTUD

MBA BUILDING SUPPLIES — ProSTUD

RAM SALES L L C — Ram ProSTUD

SOUTHEASTERN STUD & COMPONENTS INC — ProSTUD

STEEL STRUCTURAL SYSTEMS L L C — Tri-S ProSTUD

2C. **Framing Members* - Steel Studs** — Not shown - In lieu of Item 2 — For use with Item 1C, proprietary channel shaped steel studs, 1-1/4 in. deep by min 3-1/2 in. min width fabricated from min 0.020 in. thick galv steel. Studs cut 3/8 to 3/4 in. less in length than assembly height.

TELLING INDUSTRIES L L C — Viper20™

2D. **Framing Members*— Steel Studs** — As an alternate to Item 2 - For use with Item 1D, channel shaped studs, min 3-1/2 in. wide fabricated from min 0.018 in. thick galv steel, spaced a max of 24 in. OC. Studs to be cut 3/8 to 3/4 in. less than assembly height.

TELLING INDUSTRIES L L C — TRUE-STUD™

3. **Gypsum Board*** — 5/8 in. thick, 4 ft. wide with beveled, square or tapered edges. Applied vertically with joints centered over studs and staggered between layers.

NATIONAL GYPSUM CO — 5/8 in. thick Type FSL, FSW, SoundBreak XP Type X Gypsum Board

4. **Fasteners** — (Not shown)- For base layer, 1-1/8 in. Type S screws used to attach panels to studs, spaced 8 in. OC. around perimeter and 12 in. OC. in field. Second layer, 1-5/8 in. long Type S screws spaced 12 in. OC. around perimeter and 12 in. OC. in field. Second layer screws staggered 6 in. OC. from base layer. Face layer, 2-1/4 in. Type S screws spaced 8 in. OC. around perimeter and 12 in. OC. in field. Face layer perimeter screws staggered 1 in. OC. from second layer and staggered 6 in. OC. in field.

5. **Joint Tape and Compound** — Vinyl or casein, dry or premixed joint compound applied in two coats to joints and screw heads of outer layers. Paper tape, nom 2 in. wide, embedded in first layer of compound over all joints of outer panels.

*Bearing the UL Classification Mark

[Last Updated](#) on 2013-06-06

[Questions?](#)

[Print this page](#)

[Terms of Use](#)

[Page Top](#)

© 2013 UL LLC

When the UL Leaf Mark is on the product, or when the word "Environment" is included in the UL Mark, please search the [UL Environment database](#) for additional information regarding this product's certification.

The appearance of a company's name or product in this database does not in itself assure that products so identified have been manufactured under UL's Follow-Up Service. Only those products bearing the UL Mark should be considered to be Certified and covered under UL's Follow-Up Service. Always look for the Mark on the product.

UL permits the reproduction of the material contained in the Online Certification Directory subject to the following conditions: 1. The Guide Information, Assemblies, Constructions, Designs, Systems, and/or Certifications (files) must be presented in their entirety and in a non-misleading manner, without any manipulation of the data (or drawings). 2. The statement "Reprinted from the Online Certifications Directory with permission from UL" must appear adjacent to the extracted material. In addition, the reprinted material must include a copyright notice in the following format: "© 2013 UL LLC".